



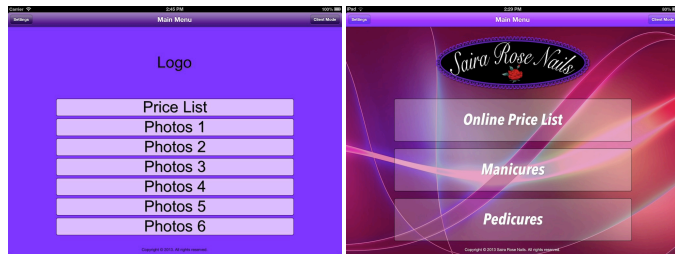
NAIL TECH CLIENT INSTRUCTION MANUAL

Nail Tech Client supports all device orientations.

Create your own unique design with over 16 million colours to choose from.

MAIN MENU

The Default Main Menu screen versus a personalised Main Menu



When you start NTC for the first time, things will look rather simple (as pictured on the left above).

All buttons are visible by default but the resulting screens will be empty as you have not yet added any photos or price information.

The picture on the right gives an example of what can be achieved quite quickly by adding a background image, a logo and changing some colours.

This is the screen that your clients will be greeted with when first using Nail Tech Client (NTC), so it is important that you spend some time later in the Settings screen to help it represent your Brand. This is achieved by being able to change button colours, font colours, fonts, button background images, page backgrounds, hiding or showing only the elements you require and also being able to change the name of each Client Button.

As colour transparency is supported using the Alpha slider when choosing colours, you can combine colours and images for some amazing eye-catching effects!

CLIENT MODE/STAFF ONLY

You have the option to set an Admin Password to prevent unauthorized access to the NTC Settings. This button will toggle between Client Mode and Staff Only Mode. If Client Mode is active, the Settings button will disappear.

If you do choose to set a password (by using the Set Admin Password in Settings), please remember to write it down somewhere as you will need it to make your Settings button available again.

Forgotten Password:

You have an unlimited amount of tries to guess your password but you can also email support@nigelgreensapps.com for password recovery instructions.

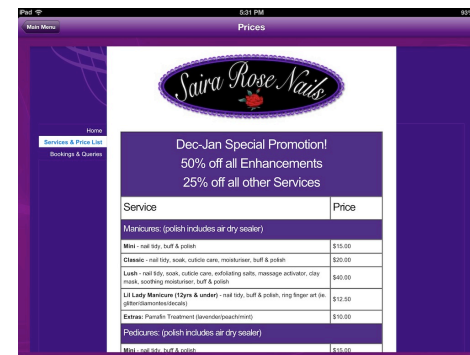
LOGO

You can use plain text or an image for your business logo. You can also choose not to display one.

PRICE LIST

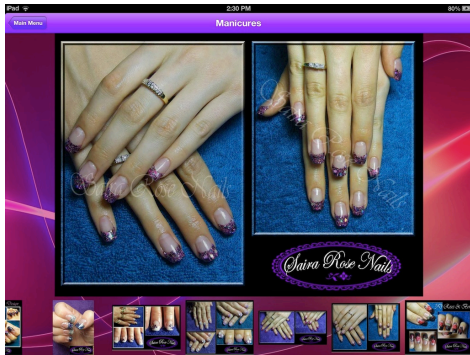
You can choose to display a price list if you wish. There are three source options in the Settings screen: Text, HTML or URL. If you choose to use a URL or HTML with external links, remember that you will require internet access for it to display anything.

(Read more about the Price List in the Settings section)



PHOTOS 1 - 6

The most valuable feature of NTC from a clients perspective would be the ability to see photos of your work.



You can think of these buttons as categories for your photos. Each category allows your clients to quickly and easily browse your photos with a flick of the finger. When they find one they want to see in more detail, they touch the thumbnail and it appears in the large display. They can then zoom in and out using a pinching gesture if they wish to see more detail.

If you have set up more than one photo category, they can return to the Main Menu to choose another.

If you don't want to have 6 photo categories, you can choose to hide any number of them in the Settings screen, even out of order. The visible buttons will automatically resize themselves to fit the available space.

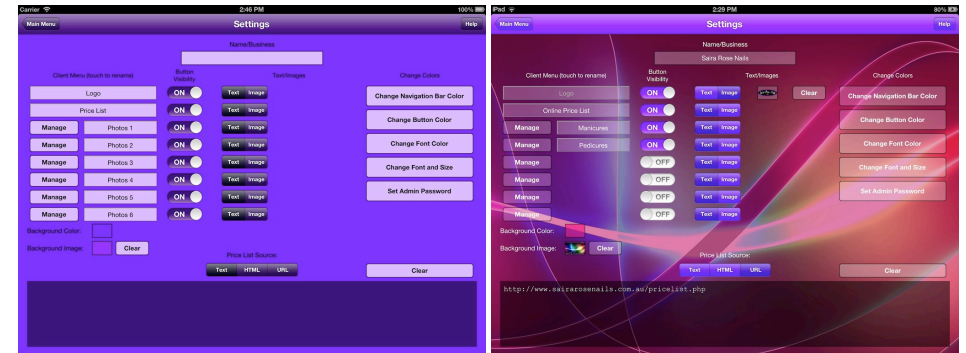
YOUR COPYRIGHT

After setting your Name/Business in the Settings screen, your copyright information will appear automatically on the Main Menu using the current year.

To begin customising NTC to suit your own unique Brand, use the Settings button in the top left corner of the Main Menu to display the Settings screen.

SETTINGS

The Default Settings screen versus a Branded Settings screen



NAME/BUSINESS

Enter your name or business name here. This will be used to construct your copyright information on the Main Menu. The current year is automatically added.

BUTTON VISIBILITY

You can choose any combination of button visibility. Use the on/off switches to control what is visible and what is not. Whatever you choose to remain visible on the Main Menu will automatically be resized to fit the available space.

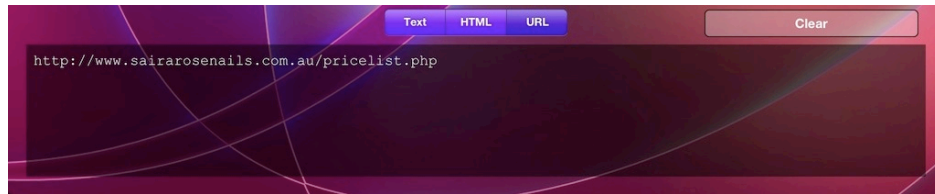
TEXT/IMAGES

Choosing Text will use the current Button colour. Choosing Image will allow you to load an image to become the background for that button.

PRICE LIST SOURCE:

The Price List is a deceptively simple, yet powerful object. It is not just limited to being a price list, but can in fact become almost anything.

- **Text:** If the Price List Source is set to Text, it will simply display whatever has been typed into its source box on the Settings screen.
- **HTML:** If the source type is set to HTML, it will act as a webpage, giving you full control over the page layout and respecting all the HTML formatting tags you use. When entering your HTML a button will appear called HTML Helpers. This provides a quick way to insert common HTML tags into the source box.
- **URL:** If however, you decide to use the URL source type, you get so much more than just one page. After entering your full website URL in the source box, it not only displays your chosen webpage but also allows your clients to navigate your entire website without leaving the App.



CHANGE NAVIGATION BAR COLOUR

You can change the colour of the top bar. This will be used throughout all NTC screens.

Note: Transparency will have no effect on the Navigation Bar colour.

CHANGE BUTTON COLOUR

Using transparency (Alpha) can provide many more different looks when combined with screen background images.

Note: Button colour is overridden when using Button Background images.

CHANGE BORDER COLOUR

The border colour of all buttons used in NTC.

CHANGE FONT COLOUR

The font colour used on buttons and in the Price List (if the source is Text).

CHANGE FONT AND SIZE:

The font used on buttons and in the Price List (if the source is Text).

SET ADMIN PASSWORD

There are no password rules. Your password can be as simple or as complicated as you like. To remove a current password, touch the Continue button without entering a password.

HOW TO ADD A BUTTON BACKGROUND IMAGE

Choose the Image option from the Text/Image and a box will appear next to it. Touch the box and choose an image from your Photo Album. If there is an existing image, just touch the box with the existing image and choose from the Photo Album again to replace it.

HOW TO REMOVE A BUTTON BACKGROUND IMAGE

Touch the Clear button next to the existing image.

BACKGROUND COLOUR

The background colour is used throughout all the NTC screens. You can choose to use a solid colour (if you do not use a Background Image) or you can choose to reduce the transparency (Alpha) in the colour to combine it with a Background Image.

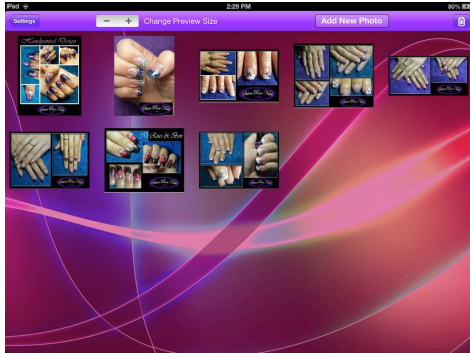
RENAMING CLIENT MENU BUTTONS

Any or all of the Main Menu buttons can be renamed to anything you like. The only restriction is the button type that each belongs to. For example: the Logo button can be renamed to anything but will always be associated with the Logo object. The Price List button can be renamed to anything but it will always be associated with the Price List object. The Photos 1-6 buttons can be renamed to anything but will always be associated with photo categories or album objects.

BACKGROUND IMAGE

The background image is used throughout the NTC screens and can be combined with a Background colour for tinting effects. To set a background image, touch the box and choose an image from your Photo Album. If there is an existing image, just touch the box with the existing image and choose from the Photo Album again to replace it. To remove a background image, touch the Clear button next to the existing image.

MANAGING YOUR PHOTOS





CHANGE PREVIEW SIZE

You can make the photo previews larger or smaller by using the plus or minus symbols on the top bar. This has no effect on the size of the photos that your clients see. It is just for your benefit while you manage your photos.

ADDING PHOTOS

To add a photo, touch the Add New Photo button on the top bar and choose one from your Photo Album.

DELETING PHOTOS

To delete one or more photos, enable Delete mode by touching the trash bin icon in the top right corner of the screen. A  will appear in the corner of each photo. If you change your mind or when you are finished deleting, touch the trash bin icon again to turn off Delete mode. If you touch a photo with a  it will be removed from this category only. It will still exist in other categories (if you added it into more than one) and will also still be in your Photo Album if you want to add it back in again later.

REORDERING PHOTOS

You can change the order in which your photos appear to your clients. To reorder your photos, touch and hold down the photo for about 2 seconds after which the photo will dim and grow slightly. Without lifting your finger, drag the photo to the new position and let go when ready.



WWW.NIGELGREENSAPPS.COM



Copyright © 2013 Nigel Green. All rights reserved.

Apple, the Apple logo, iPod, iPod touch, iPhone, iPad and iTunes are trademarks of Apple Inc., registered in the U.S. and other countries. App Store is a service mark of Apple Inc.